

YSGOL PANT Y RHEDYN LLANFAIRFECHAN CONWY



SCHOOL PROSPECTUS

2021-22

TRWY YMDRECH BYDDAF YN LLWYDDO
THROUGH EFFORT I WILL SUCCEED



Welcome Letter:

Dear Parents,

Thank you for taking the time to read this prospectus which aims to give you but the briefest insight into our school. Choosing the right school for your child is vitally important: possibly the most important decision you have yet to make as a parent.

As parents, we all want to give our children the best possible start in life and obviously this includes providing them with the best quality of education possible. We all want our children to grow and to be taught in an environment which is happy and safe. A place where our children feel valued and are given the opportunity to grow as young people- emotionally, physically, morally and most importantly educationally.

At Ysgol Pant y Rhedyn, we believe that we can offer your child all of these experiences. Children are taught and supported by a dedicated team of staff who work tirelessly in creating an excellent teaching and learning environment. We are a school which promotes all facets of learning in a happy, safe and nurturing environment. We are a school where quality learning always takes place.

We pride ourselves in the broad, balanced and full education programme we provide at Key Stage 2. We are equally proud of the ethos and atmosphere which is evident throughout every aspect of school life; friendliness, respect and co-operation are of great importance to us all.

Many visitors to the school comment on the warm welcome they receive and the politeness of our pupils. We value our pupils and we believe that their time in school should be rewarding and fulfilling. Everyone is welcomed to the school where a deliberate attempt is made to ensure a 'family' atmosphere and to include everyone in our activities. We hope, therefore, that every pupil will be happy here and that parents and staff work closely together towards achieving these very aims.

I look forward to meeting you soon, but in the meantime, should you have any queries; please contact me at the school at any time. With thanks for your cooperation and trust.

Yours faithfully – on behalf of the staff and Governing Body,

Matthew Jones (Headteacher).



PROSPECTUS- INFORMATION FOR PARENTS

Name of School: Pant y Rhedyn
Llanfairfechan
LL33 0PA
Tel: 01248 680642
E-mail: pennaeth@pantyrhedyn.conwy.sch.uk

Headteacher: Matthew John Jones B'Ed ,NPQH

Chair of Governors: Mr Neil Rawlinson

Description of School: Pant y Rhedyn is a County Primary School (Junior).It is a daily, bilingual, co-educational school.

Name and address of Local Education Authority: The Corporate Director Lifelong Learning
Conwy County Borough Council
Government Buildings
Dinerth Road
Colwyn Bay
LL28 4UL

THE GOVERNING BODY

Cadeirydd/Chair	Mr Neil Rawlinson	Cynrychiolwr Rhieni/Parent Governor
Is-Gadeirydd/Vice Chair	Mrs Emma Shiland Mrs Ffion Williams	Cynrychiolwyr Rhieni/Parent Governors
	Cllr Andrew Hinchliff	Cynrychiolydd yr Awdurdod Addysg LEA Representative
	Ms Claire Hodgkinson	
	Mrs Karen Griffiths	
	Mrs Delohne Merrell	Cynrychiolydd Cymunedol Community Representative
	Mrs Claire Hughes	
	Mrs Ffion Williams	
	Mrs Emma Shiland	Cynrychiolwyr Rhieni Parent Governors
	Mr Neil Rawlinson	
	Mrs Kirsty Merrell-Dailly	
	Mrs Jenny Rawlinson	
	Mr Matthew Jones	Pennaeth/Headteacher
	Mrs Sioned Ryder	Cynrychiolydd Staff Addysgu Teaching Staff Representative
	Mrs Joanne Beaumont	Cynrychiolydd Staff Ategol Other Staff Representative
	Ms Liane Pattinson	Clerc Clerk

STAFF YR YSGOL/SCHOOL STAFF

<u>Headteacher /Pennaeth</u>	Mr Matthew Jones
<u>Deputy Headteacher /Dirprwy Bennaeth</u>	Mrs Sioned Ryder
<u>Athrawes 'Ogwen' Teacher</u>	
<u>Athrawes 'Anafon' Teacher</u>	Mr Ifan Hughes
<u>Athrawes 'Crafnant' Teacher</u>	Mrs Catrin Williams
<u>Athrawon 'Peris'/'Peris: teachers</u>	Mrs Kaylee Scott Mrs Ffion Nixon
<u>Athrawes 'Padarn' Teacher</u>	Miss Ffion Jones
<u>Athrawes 'Alaw'</u>	Miss Julie McKeaveney
<u>Athrawon Anghenion Addysgol Ychwanegol</u> <u>'Additional Learning Needs' Teachers</u>	Mr Matthew Jones Mrs Catrin Williams
<u>Cymhorthyddion Dosbarth</u> <u>Learning Support Assistants</u>	Ms Gweno Bond Mrs Joanne Beaumont Ms Nicky Bartholomew Mrs Lisa Sommerton-Smith Miss Abby Edwards (PPA cover)
<u>Ysgrifenyddes/Clerc Cinio</u> <u>Secretary/Dinner Clerk</u>	 Ms Liane Pattinson
<u>Staff Ategol / Ancilliary Staff</u>	
<u>Gofalwraig/ Cleaner in charge</u>	Mrs Susan Simpson
<u>Prif Gogyddes/Head Cook</u>	Ms Jane Griffiths
<u>Cogyddion/ Cooks</u>	Ms Jane Griffiths
<u>Glanhawyr/ Cleaners</u>	Mrs Alison Cielecki Mrs Patricia Griffiths
<u>Staff Amser Cinio</u> <u>Midday Supervisors</u>	Mrs Rowena Clayton/Mrs Lisa Sommerton Smith
<u>Staff Clwb Brecwast</u> <u>Breakfast Club Supervisors</u>	Ms Gweno Bond Mrs Rowena Clayton Mrs Jane Griffiths



Trwy Ymdrech Byddaf yn Llwyddo
Through Effort I will Succeed

VISION, ETHOS AND VALUES OF THE SCHOOL



The aim of the school is to ensure that the education provided enhances the spiritual, moral, cultural, mental and physical development of each pupil and that the nature of the curriculum is varied, expansive and balanced so that each pupil may be prepared for the opportunities, responsibilities and experiences of adult life.

The core values of the school can best be highlighted in the school mission statement of 'Through Effort, I will Succeed.' This is the common core element that we strive for and try to implement in all aspects of the children's time here with us in Ysgol Pant y Rhedyn.

In addition the children are also asked to learn eight golden words (in Welsh) which help us to foster a positive attitude towards our school and our learning. The golden words are:-

- **GWENU-** to smile.
- **GONEST-** to be honest.
- **GOFAL-** to be caring.
- **GWRANDO-** to listen

- **GWEITHIO-** to work.
- **PARCH-** to show respect.
- **CYFEILLGARWCH-** Friendship
- **CYMREICTOD-** Welshness.

MISSION STATEMENT

Ysgol Pant y Rhedyn is an inclusive school. It is a school that values all its pupils and we work tirelessly in order to ensure that all pupils reach their potential and that they all feel a sense of achievement. Our aims for our children are closely aligned to those of the Donaldson Reports. We aim to ensure that every children who leaves us are:

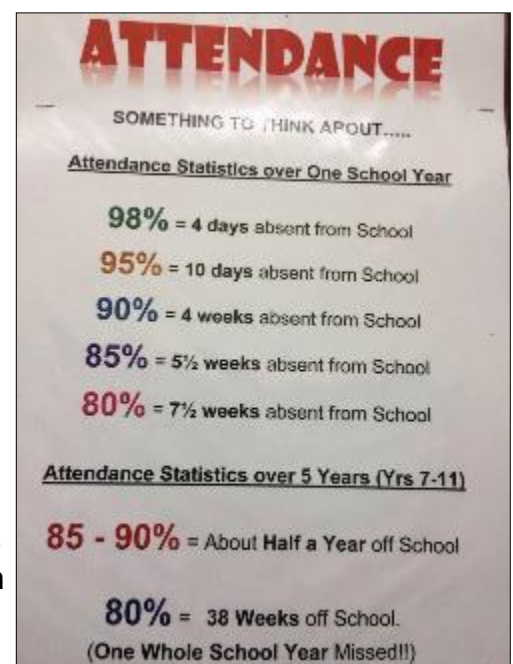
- ambitious, capable learners.
- ethical, informed citizens.
- healthy, confident individuals.
- enterprising, creative contributors

We aim to ensure that all pupils leave us with the skills and values in place in order to succeed in life and to give the best of effort in all that they do-
'Through Effort, I will succeed!'

THE SCHOOL'S ADMISSION POLICY

Conwy County Borough Council, as the LEA, decides the criteria and procedure for admissions to Ysgol Pant y Rhedyn. Conwy's Primary School Admissions Policy is available online at: -www.conwy.gov.uk. Type in Primary school admissions policy in the search engine.

The LEA is responsible for all admissions to the school. Most pupils attending the school transfer from the Infants in September. Usually, during the last term in the Infants school, pupils are given a Junior School preference form which must be filled in by Parents. They are also requested to fill in a Pupil Information Collection Sheet at this time. When transferring over to us, priority will always be given to children living within our catchment area. It is the LEA who are responsible for considering requests from outside this catchment area. The school has been given a Standard Admissions Number by the LEA. It is this Standard number that determines whether or not the school is at full capacity.



Sometimes pupils do join us having moved into the area or having been to other schools first. If you have moved into the area then the application process is fairly straight forward. Parents are requested to contact the Head teacher in order to find out if the school has room for your child within their age group class. When accepted, you will be asked to complete a 'Pupil Collection Form' which should be returned to the school as soon as possible so that your child can begin. We always try to make new pupils feel welcome and encourage them to make new friends quickly.



Sometimes parents wish to move their children to Ysgol Pant y Rhedyn from another local school. Usually it is possible to do so but in such instances we do urge parents to speak to the Headteacher of their child's current school before they make a final decision.

SCHOOL HOURS

Morning session 9:00 – 12:00

Afternoon session 1:00 – 3:30

Having deducted break times, pupils are actively engaged in teacher led learning for a total of 25 hours per week (this total includes assemblies).



It would be greatly appreciated if parents could ensure that their children attend punctually at the beginning of each school session and that they are collected promptly at the end of the school day.

The school bell is rung at 9:00a.m. It would be appreciated if parents could leave the premises upon hearing the bell. A teacher is on playground duty from 8:50a.m until 9:00a.m. Pupils are also supervised as they leave the school grounds and for ten minutes at the end of the school day. Pupils are not allowed to leave the school premises during the school day unless this has been authorised by their parents (usually by means of a letter).

Playtime

All pupils have a break from lessons during the school day. At present the breaktimes run as follows:-

Morning break- 10:45 until 11:00am

Lunch Break- 12:00 until 1:00pm

Afternoon Break- 2:15pm until 2:25pm.

Children mainly play on the yard, but are allowed onto the fields when the weather is dry. The school has Playground Buddies who encourage children to play positively

and who share our play resources. Children can bring their own healthy snack for breaktimes. Chocolate and crisps are not permitted during this time.

Pupils remain in their classes during wet break times, but they are afforded a break from their work.

The School Community

Our school is a community that is made up of children, parents, teachers, support staff and governors. Everyone has a part to play and this brings with it certain responsibilities.

Children

- Come to school with their parents and friends.
- Always try their best in everything that they do.
- Become independent in managing their own possessions.
- Understand and follow school rules.
- Follow class routines.
- Respect the staff.

Parents

- Bring their children to school and collect them on time.
- Ensure that their child attends school.
- Support their child by reading with them and encouraging them to complete any homework tasks.
- Keep the school informed of any concerns they may have regarding their child's welfare.
- Try to attend any school based activities eg school café when possible.

Teachers

- Take responsibility for the children between 8:50am and 3:30pm.
- Work closely with parents.
- Provide the highest quality of education at all times.

Governors

- Support and assist the Head teacher in the strategic direction of the school.
- Hold the school accountable.



USE OF WELSH WITHIN THE SCHOOL

The school is currently regarded as being in Category 4 for the use of Welsh by the Welsh Government. This means that the school is 'Predominantly an English Medium primary school but with significant use of Welsh'.

In the junior stage, both Welsh and English is used in teaching but there is greater emphasis on English. Welsh is used as the medium of teaching or learning for between 25% and 50% of the primary curriculum. The day to day language or languages of the school are determined by the school's linguistic context. Both languages are used as languages of communication with the pupils and for the school's administration. A high priority is given to creating a Welsh ethos. The school communicates with parents in both languages.

YSGOL PANT Y RHEDYN LANGUAGE POLICY

GENERAL AIMS

The Council supports a bilingual policy in all its schools. The aim is to develop the ability of pupils and students within the county to be confidently bilingual in order that they can be full members of the bilingual society of which they are a part. All educational establishments within the county should reflect and reinforce the language policy in their administration, their social life and pastoral arrangements as well as their academic provision.

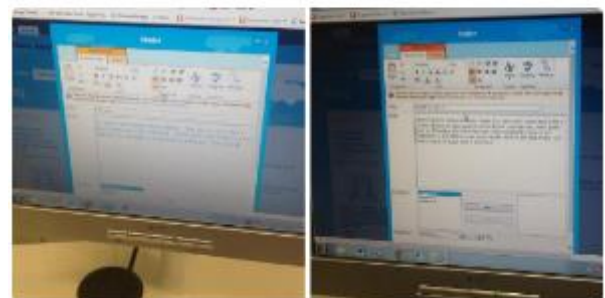
SPECIFIC AIMS

To consolidate each child's abilities in Welsh and English, both active and receptive so as to progressively develop his/her skills in speaking, reading and writing fluently and confidently in both languages. We aim for all pupils (special provision may be made for Junior late-comers) to be bilingual by the time they leave Ysgol Pant y Rhedyn in Year 6.

- Ysgol Pant y Rhedyn is a school that introduces Welsh for 25% of the National Curriculum subjects.



Plant yn defnyddio Hwb+ i ysgrifennu yn y Gymraeg.
Children writing in Welsh on Hwb+



- The school takes great pride in its Welsh Ethos. Pupils are encouraged to converse through the language at a level they feel comfortable with. As a result, the majority of lessons are delivered through the medium of English, but elements of the curriculum are taught through the medium of Welsh.
- The school aims to promote the use of Welsh as much as is possible. As a result, much of the day-to-day language of communication at the school is in Welsh.
- The school will deal sensitively with late-comers so that they do not feel alienated and may be assimilated gradually into school life- Pupils who have moved into the area will be offered the opportunity for their child to attend the language unit at Dolgarrog for a term in order for them to gain knowledge of the language.
- The school also receives pupils into the school who are very comfortable in conversing through the medium. They may come from Welsh 1st Language homes or may have transferred from Welsh 1st Language schools. In such instances, the school is eager to promote and to develop these skills. Our MAT policy allows us to provide extra opportunities for such pupils. They may do more activities through the medium of Welsh and the school may decide to provide them with an end of Key Stage 2 level in Welsh 1st language should they meet the assessment criteria.



ADVANTAGES OF BEING BILINGUAL/MANTEISION BOD YN DDWYIEITHOG

Yn Conwy y nod yw i bob plentyn gael y cyfle i adael yr ysgol a bod yn rhugl yn y Gymraeg a'r Saesneg. Mae mwy a mwy o gyflogwyr ledled y sir a Chymru gyfan yn awyddus i recriwtio staff sy'n gallu gweithio'n gyfforddus yn y ddwy iaith.

Mae dwyieithrwydd yn cryfhau'r galluoedd gwybyddol – mae pobl ddwyieithog yn tueddu bod yn fwy creadigol a hyblyg. Maent yn tueddu i fod â meddwl mwy agored, ac maent hefyd yn ei chael yn haws canolbwyntio ar amrywiaeth o dasgau ar yr un pryd. Ac mae gallu siarad dwy iaith yn helpu mewn ffyrdd eraill hefyd...

In Conwy the aim is for every child to have the opportunity to leave school and be fluent in Welsh and English. More and more employers across the county and in Wales as a whole are keen to recruit staff able to work comfortably in both languages.

Bilingualism strengthens cognitive abilities - bilingual people tend to be more creative and flexible. They can be more open-minded, and they also find it easier to focus on a variety of tasks simultaneously. And being able to speak two languages helps in other ways too...

Addysg/ Education

- Mae plant dwyieithog yn tueddu i fod yn fwy llwyddiannus mewn addysg.
- Maent yn tueddu i gyflawni'n well mewn tasgau.
- Mae pobl ddwyieithog yn ei gweld yn haws i ddysgu ieithoedd ychwanegol
- Mae plant sy'n derbyn addysg Gymraeg yn gwneud gystal, os nad gwell, yn Saesneg â phlant sy'n cael addysg Saesneg
- *Bilingual children tend to be more successful in education. They tend to perform better in tasks*
- *Bilingual people find it easier to learn additional languages*
- *Children in Welsh medium education do just as well, if not better, in English as children in English medium education*

Tystiolaeth: [Adroddiad Estyn - Saesneg yng nghyfnodau allweddol 2 a 3 \(.pdf\)](#) | [Erthygl 'The Times' 11.4.17](#)

Evidence: [Estyn Report - English in key stages 2 and 3 \(.pdf\)](#) | [Article in The Times 11.4.17](#)

Gyrfa/Career

- Mae siarad dwy iaith yn rhoi sgil arall i'w roi ar eich ffurflen gais
- Ar gyfartaledd, mae pobl ddwyieithog yn ennill 11% o gyflog ychwanegol
- Mae angen gweithluoedd dwyieithog ar gyflogwyr yng Nghymru, gan fod angen darparu gwasanaethau'n ddwyieithog
- *Speaking two languages is an extra skill to put on your application form*
- *Bilingual people earn an average of 11% more*
- *Employers need bilingual workforces in Wales, because services need to be offered bilingually*

Tystiolaeth: [Welsh speakers 'more likely to get top qualifications and jobs'](#)

Evidence: [Welsh speakers 'more likely to get top qualifications and jobs'](#)

Iechyd/Health

- Mae ymchwiliad yn dangos bod dwyieithrwydd yn gohirio dechreuad Dementia a symptomau eraill clefyd Alzheimer
- *Research shows that being bilingual delays the onset of Dementia and other symptoms of Alzheimer*

Tystiolaeth: [Delaying the onset of Alzheimer disease](#) | ['Bilingual people twice as likely to recover from a stroke'](#)

Evidence: [Delaying the onset of Alzheimer disease](#) | [Bilingual people twice as likely to recover from a stroke](#)

Bywyd/Life

- Mae siarad dwy iaith yn ehangu eich gorwelion
 - Mae medru'r iaith Gymraeg yn rhoi mynediad i agweddau helaeth ar ddiwylliant, hanes a hunaniaeth Cymru
 - Mae medru'r Gymraeg yn allwedd i fywyd cymunedol cyfoethog
 - Mae medru'r Gymraeg yn rhoi hunaniaeth gadarn ac ymdeimlad o berthyn
 - Mae medru newid o un iaith i'r llall yn hyderus yn magu hyder a balchder yn yr unigolyn
 - Gall pobl aml-ieithog fod yn fwy goddefgar tuag at ddiwylliannau eraill
-
- *Speaking two languages widens your horizons*
 - *Being able to speak Welsh gives you access to many aspects of Welsh culture, history and identity*
 - *Speaking Welsh can provide a key to a rich community life*
 - *Being able to speak Welsh gives you a strong sense of identity and belonging*
 - *Being able to switch from one language to the other with confidence gives the individual self-confidence and pride*
 - *Speaking many languages can make people more tolerant towards other cultures*

Tystiolaeth: Adroddiad ar fanteision dwyieithrwydd 'The Advantages of Bilingualism in Welsh and English' gan Yr Athro Colin Baker

Evidence: [A report on The Advantages of Bilingualism in Welsh and English](#) by [Professor Colin Baker](#)



Trwy Ymdrech Byddaf yn Llwyddo
Through Effort I will Succeed

CLASS SIZES AND COMPOSITION

As of September 2021, the school will have approximately 150 pupils aged 7 – 11 years on roll and they are taught in six mixed classes. Three of these classes are Y3/4 mixed and three are Year 5/6 mixed. We also have a number of support staff in the school who support the pupils' variety of needs.

CLASSROOM ORGANISATION AND TEACHING METHODS

A range of teaching methods are employed at the school:

- work with a whole class
- individual work
- group work
- some core subjects may also be taught in specific teaching groups.

The teacher's choice of teaching methods are influenced by various factors:

- children's needs in the classes.
- mixed age-groups and mixed languages.
- the children's attainment.
- the need to make effective use of time, space and materials.

THE CURRICULUM

The lessons taught within the school are currently planned in accordance with the 2008 National Curriculum and the Literacy and Numeracy Framework. The subjects taught are Mathematics, Welsh, English, Science, Technology, History, Geography, Religious Education, Art, Music and Physical Education. Other elements such as dance and drama are also incorporated in aspects of other subjects.

• The aim is to try and ensure that the education provided enhances the spiritual, moral, cultural, mental and physical development of each pupil and that the nature of the complete curriculum is varied, expansive and balanced. National Curriculum subjects in the school are taught partially as subjects and partially in a thematic approach. A home – school agreement will be presented to each family nature of the National Curriculum and literacy numeracy requirements.



English

Lessons are planned to the requirements of the 2008 National Curriculum and the National Literacy Framework.

The English language is essential to development and learning as it touches every aspect of the curriculum. Listening is equally essential to all language development, being linked closely with discipline and good classroom management. The basic skills of writing are constantly taught and re-taught throughout the school.



Vocabulary is always being extended, children being encouraged to use new words in a meaningful way. Spelling is an important skill fostered throughout school in a variety of ways, both formal and informal.



Parents can do much to foster good reading habits. Reading starts in the comfort and security of Mum or Dad's arms on the settee when stories are read, long before they can actually read. Reading should be projected as fun – as a pleasurable experience giving enjoyment – as a means by which we can learn. We inspire our children to develop skills in speaking and listening, reading and writing. We help them to express themselves imaginatively and communicate effectively. We encourage them to become enthusiastic and critical readers of stories, poetry and drama as well as non-fiction and media texts.

Mathematics (Numeracy)

Lessons are planned to the requirements of the 2008 National Curriculum and the National Numeracy Framework.

Numeracy is a proficiency which involves confidence and competence with numbers and measures. It is a life skill which empowers children to problem solve and to deal with most situations that can arise within the world of work. To this end, pupils within our school are encouraged to see the value of mathematics and to gain in confidence when dealing with number.



Children develop their knowledge and understanding of mathematics through practical activity, exploration and discussion. Emphasis is also placed on the pupil's knowledge of basic computation and arithmetic. Pupils are expected to learn their

times tables and to learn how to deal with number work. Children experience an increasing range of mathematical situations in different contexts.

The school also teaches FINANCIAL MANAGEMENT to pupils in Years 5&6 during their final term before they transfer to secondary school. This is to ensure that pupils have a better understanding of financial management and they soon learn to realise that money doesn't grow on trees!



Welsh

Lessons are planned to the requirements of the 2008 National Curriculum and the Literacy Numeracy Framework.

The school is rightly proud of our Welsh heritage and it is our aim for all our pupils to be bilingual by the time they leave us in Year Six. Many aspects of our everyday learning are geared towards the promotion of the language.



Trwy Ymdrech Byddaf yn Llwyddo
Through Effort I will Succeed

The school teaches Welsh in classes that are tailored to the level of fluency of the children. The school acknowledges that there are pupils in the school who are from a Welsh speaking home. For these pupils, the school teaches Welsh in classes that provide more extended tasks in order to help them develop to their full potential. Children who have only just begun to grasp the language will also be taught accordingly.

The Welsh dimension will always be promoted within the school to reflect the language, culture and heritage of Wales. For more information on Welsh please refer to the schools language policy below.

Science

Lessons are planned to the requirements of the 2008 National Curriculum and are linked to the Literacy Numeracy Framework.

Science extends and develops the pupils' understanding of the world around them.

We involve them actively in a scientific approach to learning which develops the processes of observation, data collecting, experimentation, classification, interpretation and recording.

Information Technology

Lessons are planned to the requirements of the 2008 National Curriculum and the Literacy Numeracy Framework and as of September 2017 the Digital Competency Framework. We have interactive whiteboards and computers in every classroom and an ICT suite where whole classes have access to computers. The school also has a variety of ICT equipment available for the children to use.

Our children explore ICT through a range of activities, learning to use it confidently and with purpose to achieve specific outcomes.

Crafnant @crafnantpyrh · 26 Nov 2018
Is custard a liquid? Investigating solid, liquids, gases and collids this afternoon!
@Cornerstonesedu #ks2science @PYR2115



Humanities (Religious Education, History and Geography)

Ysgol Pant y Rhedyn does not have an affiliation with any specific religion or denomination.

Religious Education currently has a non statutory status within the 2008 curriculum however in Ysgol Pant y Rhedyn the subject is taught to all pupils with the focus being on promoting the spiritual, moral, cultural and mental development of pupils. In line with the LEA's Agreed Syllabus, our lessons explore spirituality in a broadly Christian context. Pupils are given the opportunity to compare Christianity with other world religions.

Broadly within our school, children learn about beliefs and cultures and hear stories from a variety of traditions.

They explore the values and attitudes of the faith community, including Christianity and other principal religions represented in the United Kingdom.

The school has developed links with the St Mary's Church in Llanfairfechan. The local Rector, Janice Brown, visits the school on numerous occasions throughout the year and pupils from the school are given the opportunity to take part in some of the services held in the church.

RIGHT TO WITHDRAW-In accordance with statutory requirements, children take part in a daily act of worship, either in a whole school assembly or in their own classes. Parents have the right to withdraw their child from both RE lessons and /or collective worship. Please contact the Headteacher should you wish to exercise this right.

History fires our children's interest about the past. They see how it has influenced the present, learning within a chronological framework of significant events and people. It includes the social, cultural, religious and ethnic diversity of the societies studied and children gain a better understanding of themselves, both as individuals and as members of society. Use is made of both local and national places of historical interest.



Geography encourages children to find out about the natural and human worlds. They develop knowledge of people, places and environments in different and contrasting locations locally, nationally and abroad. Through their studies, our children develop an understanding of maps and a range of investigative and problem solving skills. This encourages them to think about their own place in the world and their responsibilities to other people and environments.

Art, Design and Technology

Art and design stimulate creativity and imagination providing visual, tactile and sensory experiences and a unique way of understanding and responding to the world. Our children explore the work of artists, craftspeople and designers, learning about the roles and functions of art, craft and design in contemporary life and in different times and cultures.

They learn to make informed judgements about works of art and their own artwork. For our part, we celebrate their work, displaying it throughout our school to create a colourful and stimulating environment.



Music

Music and song are a powerful and unique form of communication that change the way we feel, speak and act.

At Key stage 2, pupils are taught the skills of singing, playing instruments and practising, improvising, composing and arranging music and listening to and appraising music. These skills provide the children with an opportunity to gain delight, enjoyment and satisfaction from music.



Two peripatetic teachers visit the school once a week to provide violin, clarinet and flute lessons. The instruments are on loan from the County. Parents are charged a subsidised rate for these additional lessons. We also have Alun coming into school to offer guitar lessons as a part of our music provision- this is paid for on a weekly basis.

All pupils who receive instrumental lessons will be expected to take great care of their instruments.

Physical Education

AIMS

- To develop physical skills in all aspects of PE: gymnastics, swimming, movement, athletics and team games.
- To develop stamina and strength.
- To encourage confidence in their skills.
- To become aware of the need to work safely whilst at the same time using physical skills with enjoyment.
- To encourage perseverance with the nervous child by offering help and support.
- To encourage co-operation and a positive attitude in team games especially.

The school has a number of resources for PE which are given an annual safety check. Nevertheless the school aims to further increase its resources whenever possible.

All pupils are given the opportunity to experience all the aspects of PE each year. A number of team sports are played at school - rounders, netball, football, cricket and rugby.

The school has also introduced outdoor education activities and problem solving activities to the curriculum. Several after school sports activities are offered to the pupils. We also offer a residential trip to Plas Menai on an annual basis.

Wedi cyrraedd Plas Menai ac mae'r hwyl yn dechrau! In Plas Menai- the fun begins!



Sesiynau Pelfasged arbennig heddiw hefo Arwel Jones o Caernarfon Celts! Diolch o galon iddo am ddod draw atom!



The school has a generously sized playing field, which means that the children have their Sports Day in the school grounds. Other sports games also take place on this area. The Llanfairfechan Junior Football Team currently hold some of their training and matches there.

Some of the teaching staff in the school have coaching qualifications in football, netball and badminton. The school has also created links with Bangor City FC. Coaches from the club come into school to coach the children on a regular basis.

All of our children have the opportunity to go swimming at Llandudno Swimming Pool.

National Cycling Proficiency instruction is also provided for Year 5 and 6 pupils.



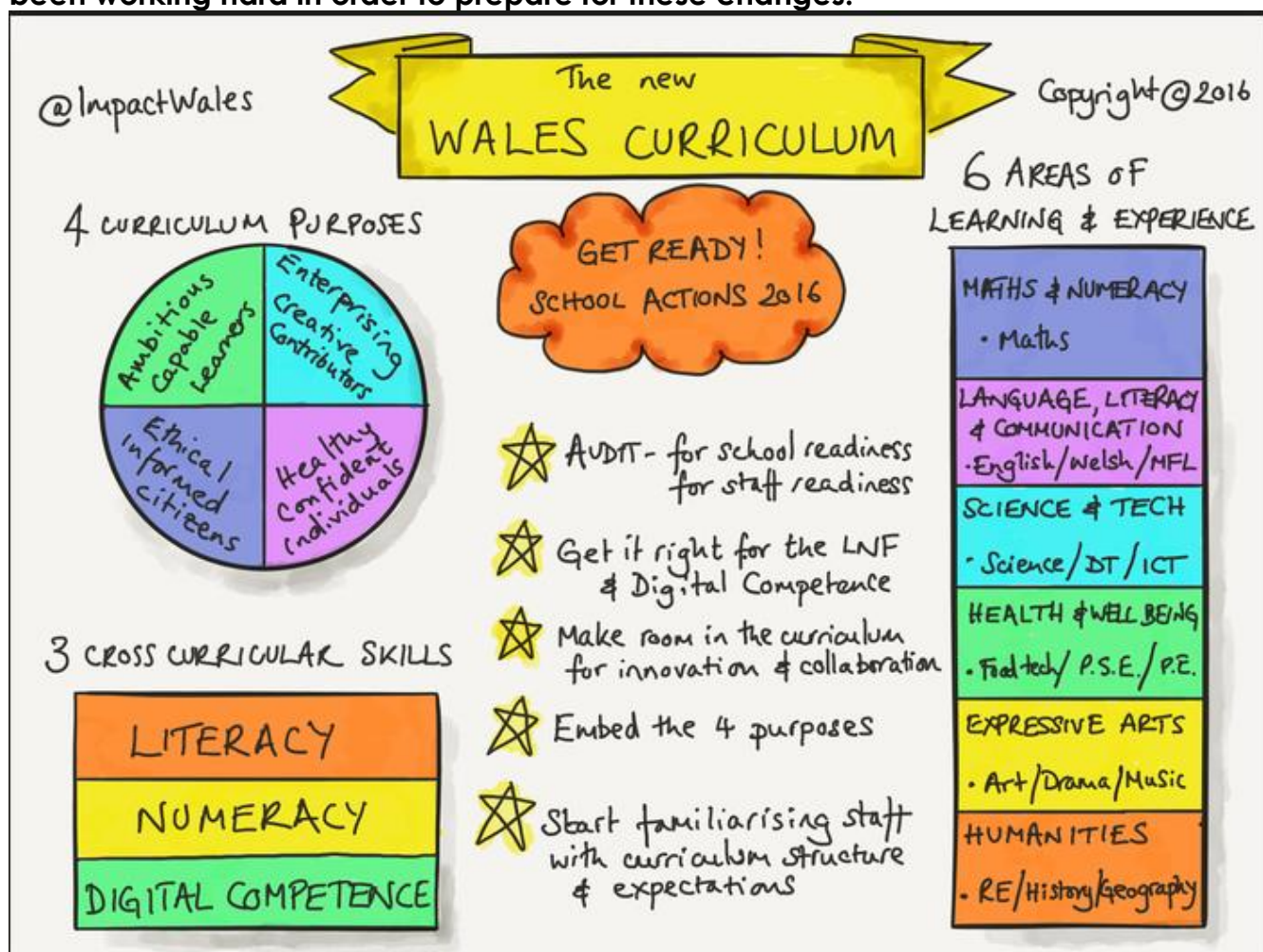
PSHE

Personal, Social and Health Education promotes children's health, well-being and safety.

It is a planned programme of learning opportunities and experiences that help children and young people grow and develop as individuals and as members of families and of social and economic communities. It equips them with knowledge, understanding and practical skills to live healthy, safe, fulfilled and responsible lives.

THE NEW CURRICULUM

Education in Wales is currently undergoing a period of change with a new draft curriculum being launched for consultation in April 2019. The aim is for the new curriculum to be operational in schools in the early 2022 and as such the school has been working hard in order to prepare for these changes.



*Thanks to @ImpactWales for the diagram design.

SEX EDUCATION AND HEALTH EDUCATION

We believe that sex education should be a part of each child's education, and an important element in his/her social development. Section 46 of the Education Act states that sex education should give proper attention to moral aspects and should concentrate on the values and advantages of family life.

Aims:

- To develop children's knowledge of how the body works.
- To develop children's understanding of the importance of reproduction in the life processes.
- To assist children to understand that living things produce their own kind.
- To encourage responsibility and respect for self and others.
- To introduce the concept of relationships as part of a wider moral framework.

The school has adopted a policy where sex education is presented as part of the health and personal education of each child who attends the school. It will not be treated in isolation as a separate subject, but will rather be integrated into the school's curriculum.

Much material related to sex and health education can be covered within the National Curriculum and R.E, e.g life processes and living things in Science, causes and effects of population growth in History and Geography themes, exploration of roles and relationships related to moral principles in R.E. The work will be appropriate to the age and stage of development of the pupils.

The school will make use of resources supplied by the Health Authority. The school invites a Health Authority representative (e.g. school nurse) to discuss with Yr. 6 pupils about their physical development, and parents will be informed when this happens.

The school currently uses the SENSE material in order to introduce this aspect within the school. Parents are more than welcome to contact the school in order to find out more about SENSE.

The school respects the parents' rights to withdraw their children from all or part of the sex education provided.

GROWTH MINDSET

There are 2 mindsets in school

Fixed Mindset

Children think their intelligence is fixed and believe that if you have ability, everything should come naturally. They want to look smart above all else and cannot handle setbacks because it makes them feel dumb. They are afraid to take risks or stretch themselves in their learning or admit to failings.

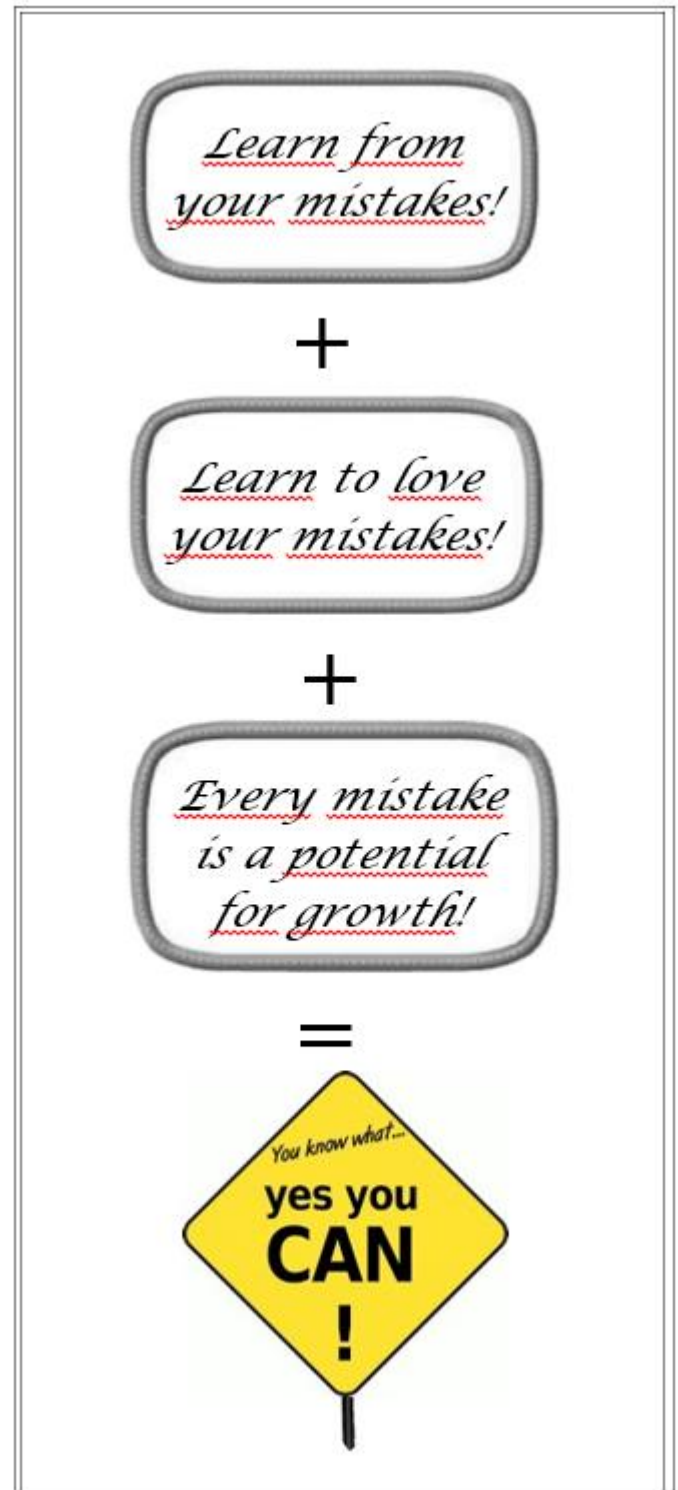
Growth Mindset

Children view learning new tasks and challenges as an opportunity to learn and grow. They are not afraid of making mistakes as they can learn from them. They are prepared to keep practising and trying. They realise that even geniuses have to work hard to develop their abilities.

In the classroom ...

Teachers create a Growth Mindset by encouraging their pupils and praising them for their efforts; the strategies they use, the choices they make and for the persistence.

Ysgol Pant y Rhedyn actively encourages our children to have a GROWTH MINDSET.



RESULTS (please see appendix for school statistics)

Pupils are tested at different stages of their time with us in order to ensure that they are developing as expected and to gauge progress. Statutory assessments take place at the end of Key Stage 2. Children are awarded a National Curriculum Level by their class teachers who use continuous assessment and their professional judgement rather than relying solely on formal tests.

Our latest results are included on a separate sheet.

HOMEWORK

The setting of homework is an important tool in order to extend and to reinforce what is learnt at school. It can be a way of assessing a pupils' progress by the parents as well as supporting work which has been done in school. On the other hand, too much homework can impact negatively on the childrens' after school interests (which are equally as important). As a school, we try to take a balanced view on homework and we have therefore adopted a formal policy with the main points being listed below.

The school should consider the following points when homework is set:

- *A child's age.*
- *The amount of homework to be set and the number of nights which are allowed for the homework to be completed.*
- *The relevance of the work in relationship to the work which is being undertaken in the class.*
- *An individual child's ability to complete the homework.*
- *Homework should be progressive and consistent both in quality and quantity.*
- *Homework should be marked on a regular basis.*
- *The teachers are aware of the need to balance the need for homework against the need for leisure time. Homework shall therefore be set to bolster current learning or to introduce new concepts and skills.*
- *Parents and pupils are also asked to provide feedback on the homework set. This is a vital tool in helping to develop home/school communication.*
- **Our policy also acknowledges that, from time to time, formal weekly homework may not be possible. The policy states the school will endeavour to provide homework on a weekly basis and thus we ask for your patience and understanding during certain periods of the school year when perhaps the homework is not quite so regular. In such instances we ask that parents concentrate on learning the Times Tables and Reading.**

ADDITIONAL EDUCATIONAL NEEDS

Up to 40% of the school population will require additional educational provision during their school career. The provision will vary according to the needs of the individual child. It is our intention to address the requirements of all our children who may have special educational needs by providing them with the opportunity, as far as is practically possible, to develop to their full potential academically and socially and to benefit as fully as possible from their education.



To this end:

- Mrs Catrin Williams is the schools Addition Learning Needs (ALN) Co-ordinator.
- children's needs will be identified by parent/class teacher as early as possible and they will be placed on the school's Additional Learning Needs Register.
- an Individual Education Plan (IEP) of work will be implemented.
- their progress will be reviewed annually and parents will be kept regularly informed.
- links with external agencies will be promoted.
- resources will need to be purchased and used across the whole ability range.

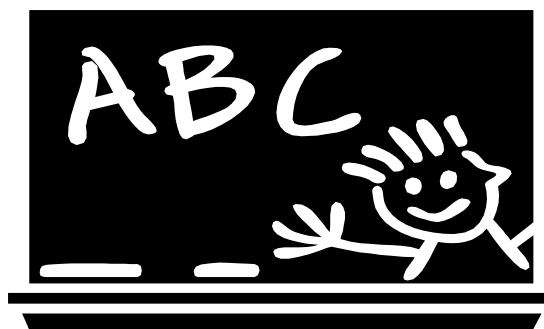
Mrs Emma Shiland is the nominated Governors for ALN.

A copy of our ALN policy is available for parents to inspect on request.

MATHEMATICS , READING AND SPELLING TESTS

- The Welsh Government have made it a statutory requirement that all pupils must undertake 'Reading', 'Procedural Maths' and 'Maths Reasoning' tests from Y2 onwards. This testing takes place in May.
- The school will also make use of other forms of periodic testing in order to ascertain whether a child should be put on the school's Additional Learning Needs Register. The school makes clear its intention to intervene early when problems arise so that additional support and intervention can be put in place in order to help the child develop in terms of numeracy and literacy.

- When concerns have arisen, the school will also make good use of the LEA expertise to advise, consult and to support pupils with Additional Learning Needs. The school conducts a termly meeting with the Inclusion Team to advise on ALN matters.
- The children who were previously on the ALN register in Ysgol Babanod will automatically be placed on Pant y Rhedyn's ALN register.
- The Additional Learning Needs register is constantly reviewed and amended. Further testing will sometimes be needed in order to assess the progress being made.



CHILDREN WHO ARE MORE ABLE AND TALENTED

The school has developed a policy for the More Able and Talented Pupils. The school in line with this has a MAT co-ordinator who is currently Mrs Ryder. The school aims to identify MAT pupils at the earliest opportunity. Pupils with MAT are encouraged to develop their abilities and their successes are celebrated. All staff when planning lessons add extension activities as normal practise. The school will also liaise and consult with the Education Authority in order to ensure the school is providing the most effective methods of satisfying their educational needs. Parents are welcome to inspect the school's MAT Policy if they wish. The school also works closely with other schools within our cluster in order to plan and co-ordinate joint MAT activities.

EQUALITY, EQUAL OPPORTUNITIES, RACE AND DISABILITY

The Governing Body at this school has adopted and created an equality scheme that covers how the school will deal with issues of equality, equal opportunities, race, and disability.

The school wishes to promote positive attitudes in children, staff, Governors and parents so that the children can fulfil their potential and make choices, unhampered by expectations based on gender or role stereotyping. We seek to fulfil the aims of the school regardless of age, gender, ability, ethnic origin or background of the child. The school follows the LEA admission policy which does not permit race, sex, colour or disability to be used as a criteria for admission. We are conscious of our responsibilities to make reasonable adjustments to assist disabled stakeholders and through our Disability Access Plan we encourage input from the whole school community

It is the right of all pupils to receive the best education the school can provide, with access to all educational activities organised by the school. We do not tolerate any forms of racism or racist behaviour. Should a racist incident occur, we will act immediately to prevent any repetition of the incident.

Should anyone at our school be a victim of racism, we will do all we can to support that person in overcoming any difficulties they may have. The class teacher ensures

that all pupils are treated fairly, equally and with respect. We do not discriminate against any child.

PUPILS WITH DISABILITIES

Some children may have disabilities and consequently need additional resources. The disabilities would include for example, sensory impairments affecting sight and hearing, learning disabilities and progressive conditions where impairments are likely to become substantial. The school, as far as is physically possible, is committed to providing an environment that allows these children full access to all areas of learning. The school believes in developing and integrating children with physical disabilities. In such occurrences it would be the school's policy to discuss with the Education Authority to agree on any budgetary amendments which would ease the entry for the disabled pupil into the school.

THE PUPIL DEPRIVATION GRANT

The school is allocated a grant by the Welsh Government in the form of the Pupil Deprivation Grant. This sum of money must be used in order to tackle poverty and deprivation and to ensure that such difficulties do not put children of this nature at a disadvantage. Parents may visit our website www.pantyrhedyn.conwy.sch.uk in order to find our latest Pupil Deprivation Grant planned expenditure. During past years the school has used this grant for the following type of activities:-

- ensuring that targeted pupils have can access to nurture activities with a Teaching Assistant.
- the grant has been used to extend the time given to our Teaching Assistants so that they can provide further support in the basic skills.
- to fund the creation of a weekly target group in basic skills.
- to provide extra resources to tackle reading and maths.
- to provide learning workshops for learners.
- to provide further staff training.

PARTNERSHIP WITH INDUSTRY AND COMMUNITY LINKS

From time to time, in line with the areas of study in, e.g. Humanities or Science, the school invites representatives from industry to speak with the children, e.g. from the Snowdonia National Park, RGC 1404, The Welsh Ambulance Service, Tesco and Airbus UK to name but a few!



Parental and community involvement in the process of education is actively encouraged. No particular skill is necessary, just a willing pair of hands! Help currently extends to reading, art activities and after-school clubs.

Liaison exists with other local primary schools to extend and enhance the curriculum with benefit to all; the pupils meet for sporting and cultural events.



HIGH SCHOOL TRANSITION

Historically, the school feeds three main secondary schools namely Ysgol Aberconwy, Ysgol Friars and Ysgol Tryfan. Recently, some children have also been attending Ysgol Eirias, Ysgol Creuddyn and Ysgol John Bright. As a school, we are aware that the transfer from primary school to secondary can be a worrying time for parents. The school works closely with these schools in order to ensure that pupils can transfer in September with the minimum amount of apprehension. Year 6 pupils participate in transition activities during July. Pupils also spend a minimum of one day in their chosen secondary school. These sessions have been extended of late.

CODE OF CONDUCT, DISCIPLINE AND PASTORAL CARE

Every child is placed in the care of a particular teacher, but the whole staff endeavour to take care of the well-being of all pupils. A teacher is on yard duty for ten minutes before the start of the school session and for a similar period at the end of the school day. Playtimes are supervised by a teacher and the dinner break is the responsibility of a teacher in conjunction with the mid-day supervisors

This school encourages children to be self-disciplined and to respect others. To achieve good discipline and to learn acceptable behaviour and codes of conduct, it is important that there is a clear aim and that all concerned – teachers, pupils, parents, governors and non-teaching staff – enter readily into achieving this aim.

Our main aim is to create a sense of community where each person feels a valued member.

The school tries to achieve this by:

- creating a positive atmosphere
- setting a good example
- establishing mutual respect
- recognising good behaviour and positive contributions
- producing a sense of security
- establishing good lines of communication between school and home.

The school promotes positive behaviour. If there are continued instances of bad behaviour or bullying, parents will be informed and if necessary outside agencies may be involved.

The aim of any behavioural policy is to ensure that the whole school community is kept safe. The school has therefore also adopted a policy of 'Physical Restraint' in order to ensure the safety of our school community. This policy is in place to give all our staff the right to intervene and to physically stop any behaviour where a child is at risk of harming themselves, others within the school or where there is a risk to damaging property. Where possible, parents will be consulted if Physical Restraint is needed or used. Parents are more than welcome to see our Physical Restraint Policy if they so wish.

GIVING THE PUPILS A VOICE AND THE SCHOOL COUNCIL

At the start of every term, pupils in the classes are asked to contribute to the planning of what they will be studying for that term the teachers will then adapt their planning in order to ensure that the pupils interests are catered for.

We also give our pupils the opportunity to plan whole units of work during our pupil voice week. This is where pupils will work on a unit of work and then share their learning with parents during the parental cafes that we run.

Each year, pupils in the school also elect children to represent their interests on the 'School Council'. The main purpose of the council is to be a strong and positive voice for all the pupils and to contribute to improving the school's ethos, objectives, standards and expectations.

Mrs Gweno Bond and Mrs Nicky Ellis are our School Council Co-ordinators.



ECO-COUNCIL ,HEALTHY EATING,FOOD AND FITNESS

The school has an established Eco-council to deal with environmental issues and to promote a more positive attitude towards caring for the environment. The school has also adopted an 'Eco-code' to this end. Mrs Ffion Nixon is our Eco school co-ordinator.

The school also has a very successful 'gardening club' which is run by a parent governor and other governors. It is during these sessions that the pupils are taught how to grow their own healthy food.



We encourage the pupils to follow a pattern of healthy eating and to be aware of health education in general from the start. Because of this, pupils are not allowed to bring sweets, chewing gum, soft drinks, chocolate biscuits or cakes with them to school. We are sure that parents will agree that fruit is far healthier for children to eat at break time – if they need anything at all. Water fountains are available in order to encourage children to drink more water.



Conwy County Borough Council provide our school meals. These menus offer the children a balanced diet and are nutritionally good.

We also ask that parents provide their children with a healthy packed lunch should they wish for their child to have a packed lunch. Further advice regarding this can be sought from the school.

COMING TO SCHOOL

It is important that your child feels confident about coming to school.

The school wants an effective partnership with parents by valuing your help in the following ways:

- Coming to school on time both at the beginning and end of the day.
- Getting to know your child's teacher so that you can share in their achievements and their concerns.
- Making an appointment to talk at length about your child.
- Attending all Parents' Evenings.



- Reading at home with your child.
- Ensuring that homework is completed and returned to school.
- Reading all letters that your child brings home.
- Keeping us informed of any changes to circumstances which may affect your child at school.

Records show that effective partnership with parents is reflected in a more successful performance by children at school.

OUT OF SCHOOL HOURS ACTIVITIES AND SPORTS PROVISION

The school offers a variety of activities in which pupils may participate.

OTHER ACTIVITIES

Social - The eldest children visit the local home for the elderly before Christmas to sing carols. Children of Year 2 Ysgol Babanod are invited every summer to join with their future school friends at the end of term Disco, which is kindly organised by the school's Parents Association. The Friends of the school also organise numerous Cinema Nights for the children to enjoy.

URDD- The school runs an after school URDD club. We also participate in Urdd competitions.

The school hopes to ensure the co-operation and support of parents with all the additional activities that are arranged. The school cannot accept responsibility for supervising children at the end of meetings of the above clubs and parents/guardians are asked to ensure that arrangements are made for children to be taken home.



Plas Menai- Pupils from the school regularly attend the outdoor centre at Plas Menai carrying out activities such as problem solving and outdoor orienteering.

INTERNATIONAL LINKS

Llanfairfechan has 'twinned' with a town in Brittany called Pleumeleuc. Children from the school have previously taken part in the official signing of the 'twinning' document. The school now has links with the two primary schools that are to be found in the village namely St. Melaine Primary school and Le Petit Prince Primary School. Children from Pant y Rhedyn regularly correspond with their friends from France.



FREEDOM OF INFORMATION

The school must have a number of Policies which set out how we deal with different issues, for example, Child Protection, Collective Worship, Sex Education and Pupil Discipline.

These various Policies are available for inspection and recorded within our "Freedom of Information Publication Scheme" under which you can request copies by writing to the Headteacher (subject to certain information being confidential or otherwise exempt from publication by law).

The school is compliant with the new GDPR guidelines

CHARGING AND REMISSIONS POLICY

The Governing Body reserves the right to fully charge parents for the following:

- All activities that are arranged outside school hours.
- Damage to books, resources or other property belonging to the school, arising from the pupil's misbehaviour.
- School materials that a pupil has lost, e.g. a reading book that forms part of the school's reading programme.

The Governing Body reserves the right to charge partly for the following:

- Instrumental lessons.
- Damage to the school's windows, doors and fittings caused by a pupil or pupils' misconduct.

The principle that no child should be prohibited from participating in any activity as a consequence of a parent's inability or unwillingness to contribute to the costs, is supported by the Governors. They also recognise that the cost of these activities will have to be met from outside the school's annual budget.

The Governing Body reserves the right to request voluntary contributions towards the costs of the above and similar activities such as educational trips and transport for swimming lessons. Contributions must be wholly voluntary. Unless an activity can be held without voluntary contribution, then this will be explained to the parents at the outset.

The Headteacher and Governing Body reserve the right to cancel an activity that has been arranged if it appears that low contributions would involve a substantial loss

TOILETS

There are 2 sets of toilets at the school for pupils. The pupils have access to them throughout the day. They are attractive and age appropriate.

There is soap and handtowels available.

There are 2 sets of toilet in the coat area:

*Toilets for the boys=1 large urinal and x4 cubicle and 4 sinks

*Toilets for the girls x6 cubicles and 8 sinks. There is soap and hand drying towels available. The school's cleaner is responsible for the toilets. The toilets are cleaned daily and replenished with toilet paper, soap and hand drying towels.

There are two staff toilets within the school.

MONEY IN SCHOOL/PARENTPAY

The school is now cashless and as such all school based activities (including school meals) should now be done through ParentPay. The school secretary deals with all aspects of school payments and she will be sending through your login details and information regarding this system within a few days of your child starting within the school. She is also available to deal with any queries that you may have regarding this system.

SCHOOL DINNERS

Parents are kindly requested to use ParentPay in order to pay for school meals. Parents are also requested to inform the school if their child is vegetarian or has a food allergy.

FREE SCHOOL MEALS

Parents are requested to contact the school or Conwy County Borough Council for the appropriate claim form. Should a claim have to be renewed, parents will be supplied with a form and are kindly requested to complete the form promptly in order to avoid the build-up of arrears.

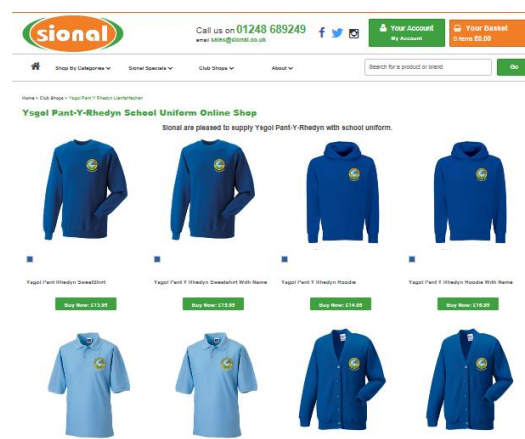
SCHOOL UNIFORM

The school has a royal blue sweatshirt on which the school badge is embroidered. These can be bought online by SIONAL or in their shop in the village.

The rest of the school uniform is made up of a pale blue polo shirt and navy/black trousers/ jogging pants / skirt.

Children are expected to have suitable footwear. If trainers are worn, the school asks that they do not have black soles as these make unsightly marks on the floor.

Parents are requested to ensure that their child's name is on his/her clothing. The school is not responsible for any lost items of clothing.



Jewellery - For reasons of safety, children are not allowed to wear jewellery, unless they have pierced ears and in such cases the earrings should be studs or sleeper-style.

P.E. LESSONS

During P.E. lessons children are expected to wear clothing suitable for physical activity, e.g. leggings/ jogging bottoms / shorts and t-shirts / vest / leotard. For indoor P.E. lessons children will be barefooted or they may wear light plimsolls.

Trainers are permitted for outdoor lessons. [For reasons of safety, children must remove watches and earrings (which in any event should be studs or sleeper-style).

SWIMMING

All pupils receive lessons at the Llandudno Swimming Pool. There is no charge for the lessons. However there is a charge for hiring the bus. Should a child be unable to take part in a PE lesson (i.e. for a medical reason only), parents are requested to send a note.

PARENTS AND THE SCHOOL

The school has a strong ethos of co-operation and mutual respect. Respect is one of our key values within the school. We cannot work effectively without the support of parents with regard to their child's work, behaviour and extra-curricular activities. Our staff also work tirelessly to try to achieve the best outcomes for your child and it is important that we all work together to achieve this goal.

Through formal and informal meetings parents are kept informed and consulted about their child's progress, and will be notified of any activities in school via newsletters. Meetings will also be arranged with parents to enable them to meet the teachers and discuss their children's work. It is appreciated that parents may wish to discuss aspects of their children's development at other times and this can be arranged by making prior arrangements with the class teacher.



Mae'r staff yma i'ch helpu.
Rydym yn hapus i wrando!
Byddwn yn ceisio fynd i'r afael â'ch pryderon!

OND Ni fyddwn yn goddef unrhyw cam-drin corfforol a /
neu gam-drin geiriol. Ni fyddwn yn goddef ymddygiad
ymosodol

Os yw ein staff yn dioddef ymddygiad o'r fath, byddwn yn
gofyn i chi adael y safle a chedwir yr hawl i alw'r heddlu
mewn achosion eithafol.

YSGOL PANT Y RHEDYN
cyd-barch
mutual respect

Our staff are here to help.
We are happy to listen.
We will try to address your concerns!

BUT...we will not tolerate any physical and/or verbal abuse.
We will not tolerate aggressive behaviour.

If our staff are subjected to such behaviour, then you will be
asked to leave the premises and we reserve the right to call
the police in extreme cases.

During the school year, we arrange many events that Parents will be invited to e.g. Parental Café, Harvest service, Christmas concerts or services, St David's Day concert and sports day.

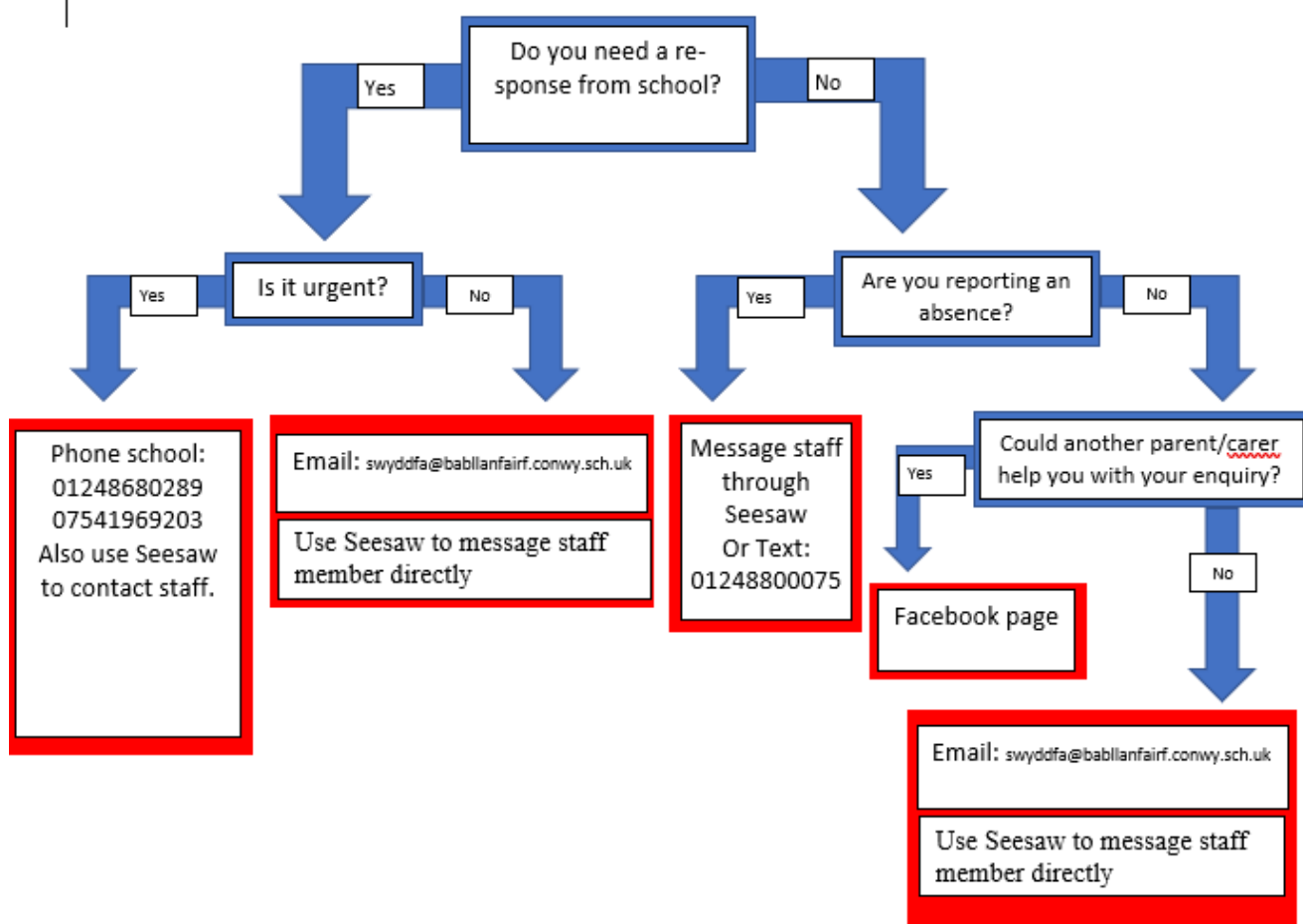
At home time, when parents arrive by car to meet their child/children, there is a great build-up of traffic and in order to ensure safety, parents are asked to keep the school crossing clear of traffic. Further parking for parents is available in the Heath Car Park.

SOCIAL MEDIA and COMMUNICATON.

We believe that clear communication is vital within the school. As such we use a range of communication tools to keep you informed. We mainly use SEESAW as our main method of communication as this is instant and can be accessed by staff and parents.

Seesaw

COMMUNICATION FLOWCHART



We also use social media sites such as Facebook and Twitter which can have an important role to play in informing parents about what is going on in school. We currently use our 'Friends of Pant y Rhedyn' Facebook page and our @PYR2115 Twitter account to do this. Parents are reminded that inappropriate use of social media will not be tolerated within the school and as such the school has developed a social media policy in order to manage this aspect within the school.

The School considers the following examples to be inappropriate uses of social networking sites. (This list is non-exhaustive and intended to provide examples only):

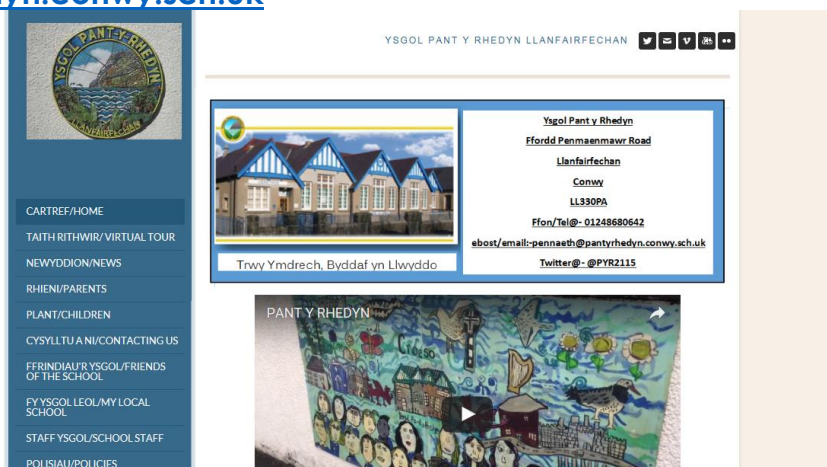
- Making allegations about staff or pupils at the School/cyber-bullying;
- Making complaints about the School/staff at the School;
- Making defamatory statements about the School or staff at the School;
- Posting negative/offensive comments about specific pupils/staff at the School;
- Posting racist comments;
- Posting comments which threaten violence.

Should such posts appear on any of our social media sites, then the school will act in accordance with our policy in order to deal with the offending posts.

SCHOOL WEBSITE

Further information about the school can be found on our website:

www.pantyrhedyn.conwy.sch.uk



*Trwy Ymdrech Byddaf yn Llwyddo
Through Effort I will Succeed*

PARENTS ASSOCIATION

The school has a hard working Parents Association which arranges various fund-raising activities throughout the year. The Association arrange our Winter and Summer Fayres and our termly Cinema Nights. Other activities are also organised such as school discos. The school and pupils have benefitted greatly from these activities and new members are always welcome. The PTA has recently purchased an outdoor activity centre for the pupils of the school.



TRAVEL TO AND FROM THE SCHOOL

As a part of a healthy life style, we encourage all parents and pupils to walk to and from school if possible. The school has a school crossing patrol officer outside the school for the morning and afternoon session. The village crossroads have an automated crossing system and we would ask that you encourage your child to use it.

The school has a cycling to school policy. We are also a Bike IT school. All pupils are encouraged to cycle to school.

The school has a Bike shelter where pupils can keep their bikes during lesson times and we take part in numerous cycling activities during the course of a school year.

The terms and conditions regarding cycling are explained in our 'Cycling to School Contract.' Cycle proficiency lessons are offered to Yr 5/6 pupils during the academic year.



PHOTOGRAPHS

As this Prospectus shows, we take loads of photographs of the children's activities, both in and out of school. They may appear in our newsletter, on our Twitter site @PYR2115 or on the internet. During the year your child may also have their picture taken for the local newspaper. Parents will need to give permission before images are published .



CHILDREN'S ABSENCE FROM SCHOOL

The Department for Education and the Welsh Office require that the absence of children from school be authorised by the parent. It is important therefore that when a child is absent for a legitimate reason for any period (e.g. sickness, medical/dental, family holidays) that the class teacher receives a letter from the parent giving the reason for the child's absence. If a letter is not received, then the absence must be recorded as unauthorised and thus regarded as truancy. If the child is likely to be absent for more than a week owing to illness, the parents should inform the school during the first week if possible.

The school has recently purchased the School Comms communication system. This system enables parents to inform the school of any absences through using a text messaging service. All parents need to do is to text the reason for their child's absence to **01248800070** or **contact the teachers directly via Seesaw**

Finally, the school also has an email address that can be used for absences. Absence@pantyrhedyn.conwy.sch.uk is the email address should you wish to do this

N.B.* Family Holidays - Schools are now obliged to record any absences longer than 10 school days within one academic year as truancy.

MOBILE PHONES

Pupils are not allowed to bring mobile phones to school, except in very special circumstances. Parents must contact school in the first instance to discuss these circumstances with the Headteacher.



HEAD LICE

As children work closely together in school it is possible that head lice may transfer from one child to another. For some years now schools have ceased to receive visits from health workers to examine children for head lice. Thus it is the responsibility of parents to be vigilant in this respect.

BREAKFAST CLUB

A Breakfast Club is held daily in the school dinner hall between 7:50 – 8:50 a.m. Children are supervised by school staff. Application forms for the club can be obtained by the school secretary.

AFTER SCHOOL CLUB

Ty Bryn Nursery now run an after school club in the school canteen. This is available during term time only. The school is happy to endorse the after school club, but does not play any part in running it. Should you wish for your child to enrol in the after school club then please contact the Ty Bryn Nursery directly on 01248 681918.

Appendix A: Summary of dealing with concerns or complaints

This procedure will be followed in the event of a concern or complaint about the school, provided that the concern or complaint does not fall under other statutory procedures.



* If the complaint is about the head teacher you should write to the chair of governors.

** If the complaint is about the chair of governors you should write to the vice chair.

All timescales shown are targets and are flexible; however it is in everyone's best interest to resolve a complaint as soon as possible.

The school will work with you to ensure that the time allowed to deal with your concern or complaint is reasonable and help to achieve an answer to the problem.

COMPLAINTS

The Local Education Authority, in accordance with the requirements of the Secretary of State, under Section 23 of the 1988 Education Reform Act, has established a procedure to consider complaints concerning the way schools' governing bodies and the education authorities act in relation to the school's curriculum and other related matters. This procedure is outlined in the document in Welsh and English, which is available at the school.

A copy will be provided free of charge as required to any parent seeking to make a complaint under these arrangements and the authority can, if necessary, provide a copy in a language other than Welsh or English.

We have provided a summary of our complaints policy. We do hope that any matters that are brought to our attention by parents are usually dealt with at STAGE A of the policy.

EMERGENCY AND SAFETY PROCEDURES

The school has comprehensive policies and procedures when it comes to dealing with Health and Safety. The school systems are monitored and audited on an annual basis. The school has a comprehensive document that can be seen if requested.

- In an emergency situation, the Head teacher may have to close the school in order to ensure the welfare and safety of pupils.
- No pupil will be released unless there is a safe place for him/her to go. Should we be aware of the need to close the school early in the morning, announcements will be made on the school website, Facebook and on local radio.
- Every effort will be made to ensure the safety of your child. The pupils will be monitored at all times. They will not be allowed to play outside during very unfavourable weather- ice/ snow/ heavy rain/ very hot days/ very windy weather. Members of staff are on playground duty each day.
- The school building is secure from the point of restricting access to strangers. No door can be opened from outside. The school has an alarm and is protected by CCTV. All external doors are locked during the day. Visitors must report to the main door upon arriving at the school and they must sign in before being allowed into the main building.
- Please do not bring dogs into the school grounds because of obvious dangers from fouling and attacking children and adults.
- The lollipop lady is available to direct parents and pupils across the road at the end of the school day.
- The school carries out risk assessments before any school trip is arranged in order to minimise the risks of injury.
- Smoking is not allowed on school premises.
- The school has a comprehensive Safeguarding document should you wish to see it.
- We hold regular fire and evacuation drills.
- In the event of a child requiring treatment from a paramedic then we will always attempt to contact parents at the earliest possible opportunity. Should a child need hospital treatment then a member of staff will accompany him/her if the parents have not arrived on site.

CHILD PROTECTION AND SAFEGUARDING POLICIES

The All Wales Child Protection Procedures 2008, Keeping Learners Safe – Welsh Government Circular 158/2015, and further Welsh Government and Local Education guidance make it clear that all schools and colleges have an important role to play in the protection of children against abuse, radicalisation and other key safeguarding issues. We have a duty to report any issues that come to light regarding these aspects.

The school has a number of policies that we follow in order to ensure the safety of the children in our care. We audit our protocols on an annual basis and these protocols and policies are linked to the directives given by Conwy County Borough Council.

Ysgol Pant y Rhedyn therefore has a duty to refer any concerns about the well being of pupils to the Social Services Department and School Medical Officer for further advice.

Matthew Jones as Headteacher is the school Child Protection Co-ordinator. Mrs Sioned Ryder is the second Child Protection Co-ordinator within the school. Mrs Claire Hughes is the nominated Governor for Child Protection. All staff and Governors attend regular Child Protection Training.

LOOKED AFTER CHILDREN

Children and young people are considered as 'Looked After Children' if they have either been taken into care by the local authority, or if they are resident in a home that has been approved by the local authority. Most Children in care live with foster parents, but many fewer children are in units of "residence", they could be staying with a relative or even be placed in the home with their biological parents.

In the case where a child attends school with these needs, we would ensure that:

- The child is allowed to participate as fully as possible in all school activities.
- Carers and social workers of these pupils are fully informed about the child's progress and attainment.
- The child is involved in all aspects of their education.

Responsibility for coordinating LAC: Matthew Jones.

Children in Care Co-ordinator is Matthew Jones.

The Governor named for looked after children is Mrs Claire Hughes.

VISITING ARRANGEMENTS

Should you decide to send your child to our school, we look forward to an open, happy and purposeful relationship in the years to come: whatever your decision, we thank you for the interest you have shown in our school. Should you require any further information then please contact the Head teacher at the school.

'Parental attendance at school meetings and parent's evenings –additional assistance. If any parent or carer has additional needs relating to disability and/or language, cultural issues with which they require assistance at a particular school event, please contact (Pennaeth) at the school to arrange the assistance requested.'



THROUGH EFFORT, I WILL SUCCEED!